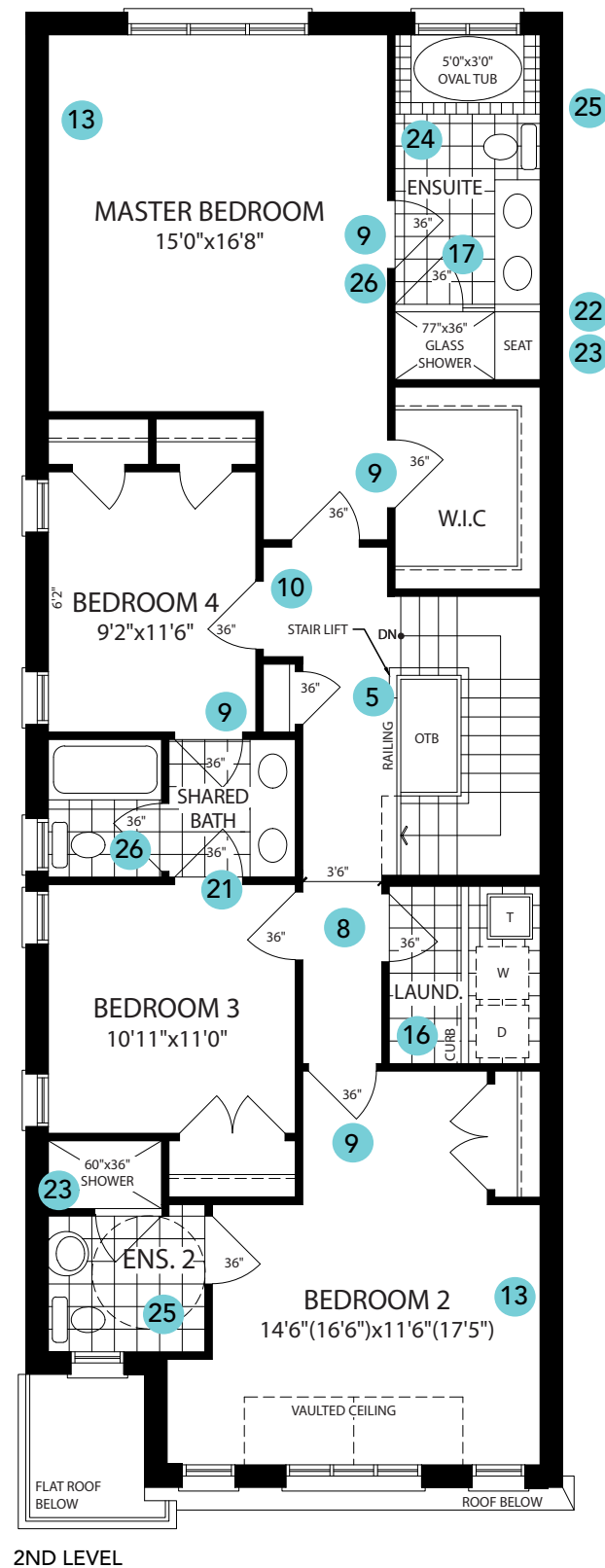
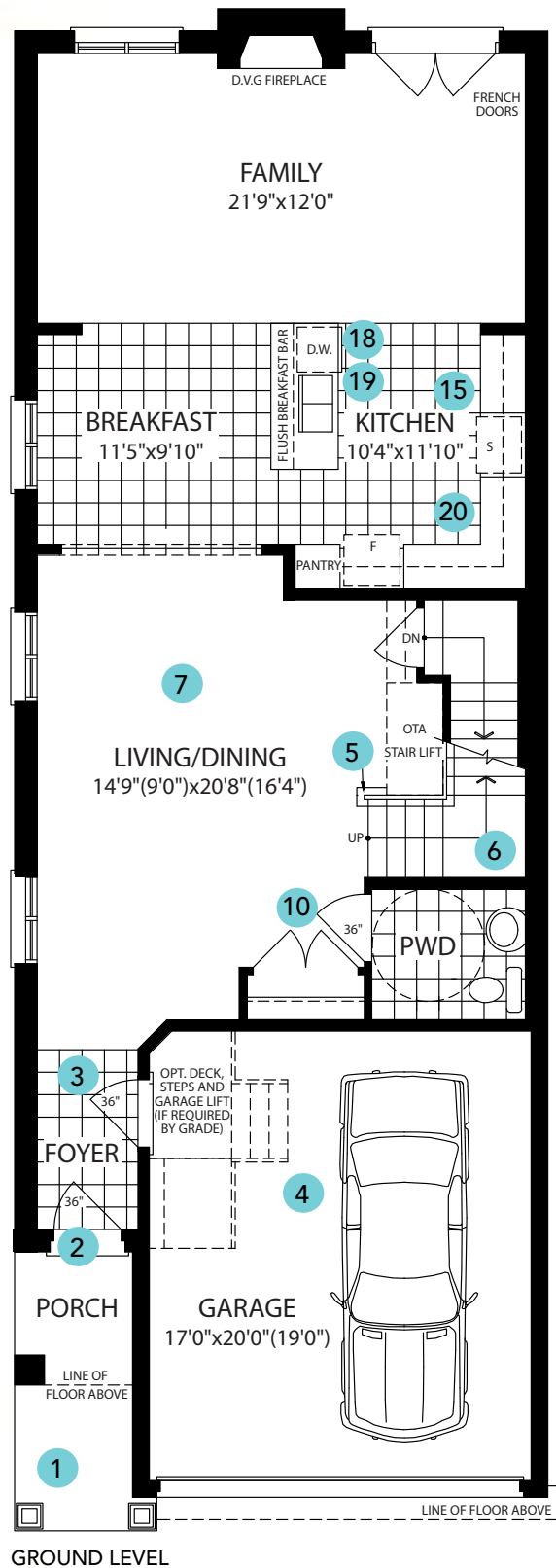


**HAYLEY**  
2626 sq. ft.  
4 Beds / 3.5 Baths



**UNIVERSAL ACCESS DESIGN FEATURES AND OPTIONS**

Marycroft Homes is proud to offer several standard features with a view towards your present and future comfort and accessibility requirements. For those with more immediate and direct needs, we are also pleased to offer a range of optional features for your convenience. If you have something in mind that we haven't represented in our presentation, please ask and we will be happy to review options with our team.

- Canopy/Roof/Ample porch space at front door (all model types).
- Main Front Entry door AND Garage to House Entry 36" wide and level floor with exterior covered porch. (Universal design only).
- Keypad controlled door locks available upon request (all model types).
- Optional vertical chair lift within garage. (Available only on detached models).
- Optional stair chair lift from Main Level to Upper Level. (Universal design only).
- Optional stair runner for better traction. (Available for all models).
- Open floor plan layout for ease of access throughout main level.
- 42" Wide interior hallways. (Universal design only).
- Major doorways (Bedrooms, Bathrooms, Walk-in closets, Laundry...) are wider to allow for wheelchair access. (Universal design only).
- All door handles, pull down, lever style are standard.
- Light switches 36" to 40" from floor. Available for all models on request (default is otherwise approx. 12" higher). Paddle type Decora switches are standard.
- Electrical outlets 18" to 24" from floor. Available on all models on request (default is otherwise approx. 4" lower).
- Extra electrical outlets next to bed available on request.
- Thermostat set at 48" above floor. Available for all models on request (default is otherwise approx. 12" higher).
- Optional appliances with forward facing controls available upon request.
- Optional front loading washer and dryer available upon request.
- All taps to be single lever and have anti-scalding feature. Standard for all models.
- Kitchen counter heights lowered and wheelchair accessibility available upon request.
- Kitchen sink with drain at back to open up area under sink for accessibility. Available upon request.
- Pull out drawers available upon request.
- Bathroom counter heights lowered and wheelchair accessibility available upon request.
- Master Ensuite walk-in shower with integrated seat available (per applicable plan).
- Shower with handheld head and lowered controls available upon request.
- Toilets are standard with bowl heights of approx. 15". Higher or lower toilets available upon request.
- Wall construction to accommodate future grab bars within Master Ensuite. Standard for all models. Optional grab bars to be installed upon request.
- Pocket sliding doors available upon request where plan permits.