

MARYCROFT  
HOMES™

Open to compare our  
*4-bedroom and  
5-bedroom options.*

MARYCROFTHOMES.COM

# PINE

## SERIES 45

4 BEDROOMS + 4.5 BATHS OR  
5 BEDROOMS + 5.5 BATHS

ELEVATION A | 3,008 SQ. FT.

ELEVATION B | 3,022 SQ. FT.

ELEVATION C | 3,009 SQ. FT.



B



A



C

# THE VALLEY

WOODBIDGE

MARYCROFT  
HOMES™

# PINE

## MODEL 45-8

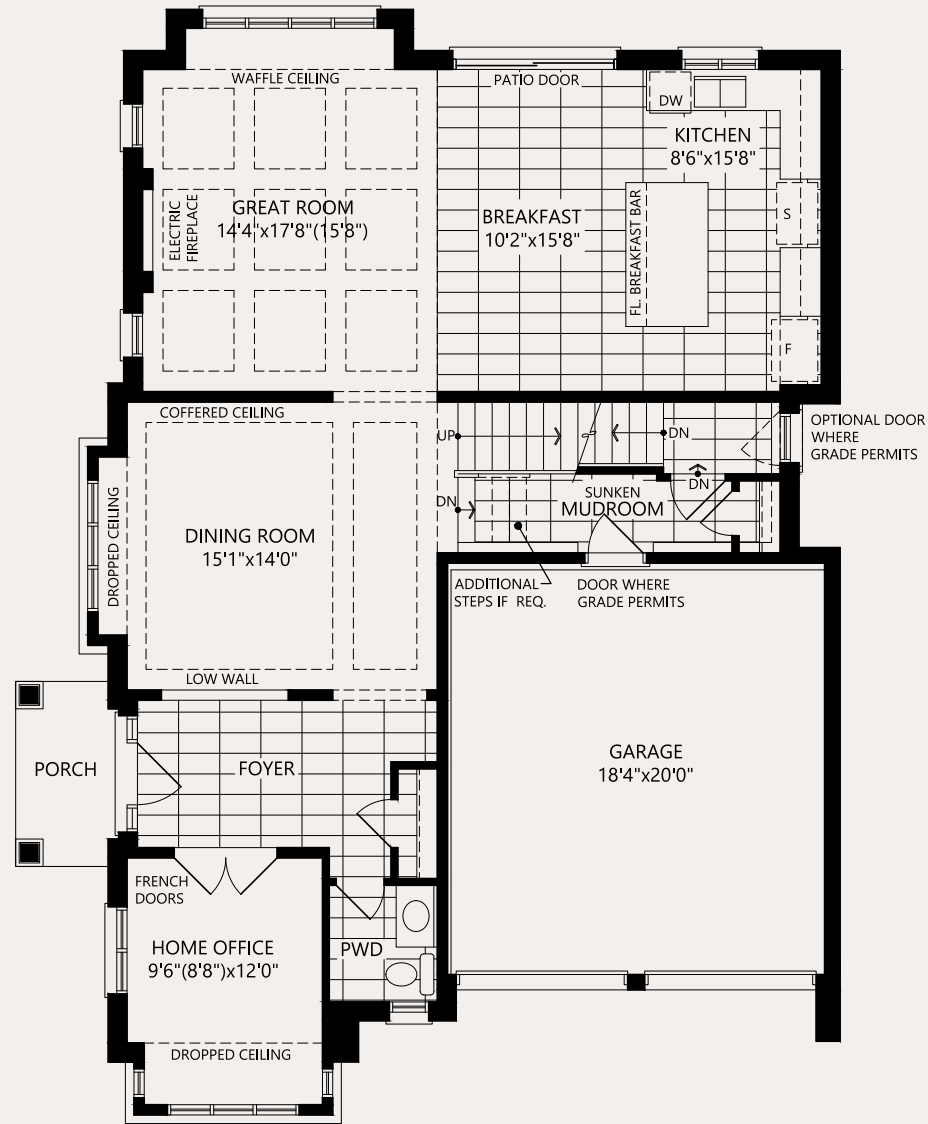
4 BEDROOMS + 4.5 BATHS OR  
5 BEDROOMS + 5.5 BATHS

Inquire with sales office or use our webtools  
to learn more about the following:

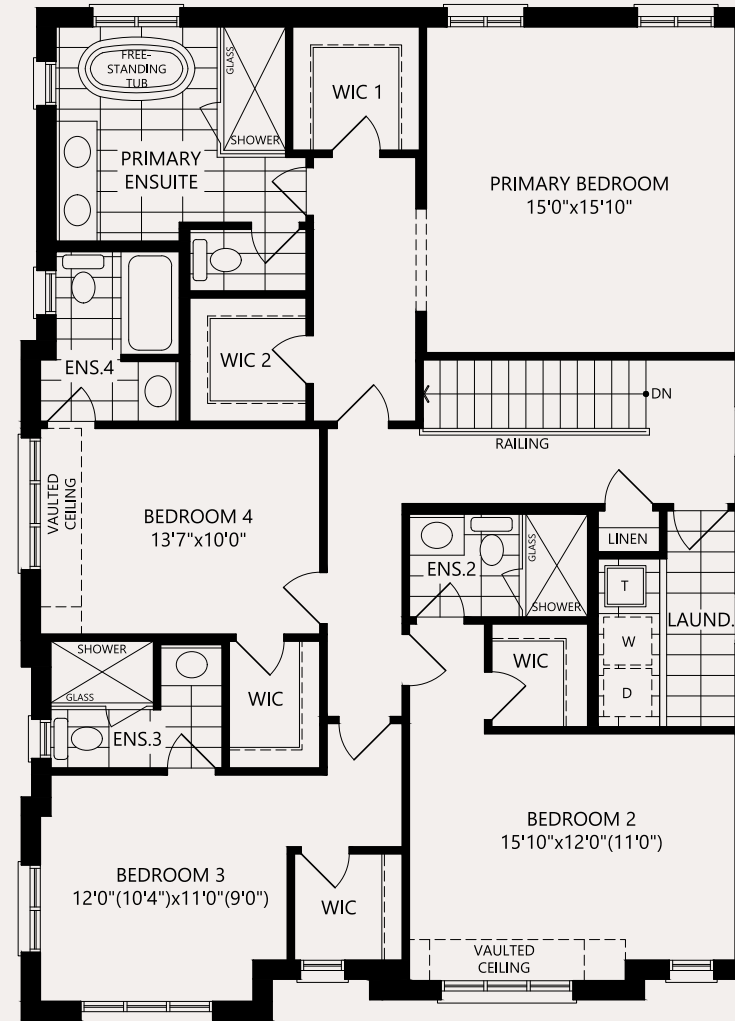
- \* Partial - Elevation B - 4/5 Bed
- \* Partial - Elevation C - 4/5 Bed
- \* Rear Walk-Up Basement - A/B/C
- \*\* Rear Walk-Out Deck Condition - A/B/C

\* MUST BE ORDERED AT TIME OF SALE  
\*\* DETERMINED BY SITING AND GRADING

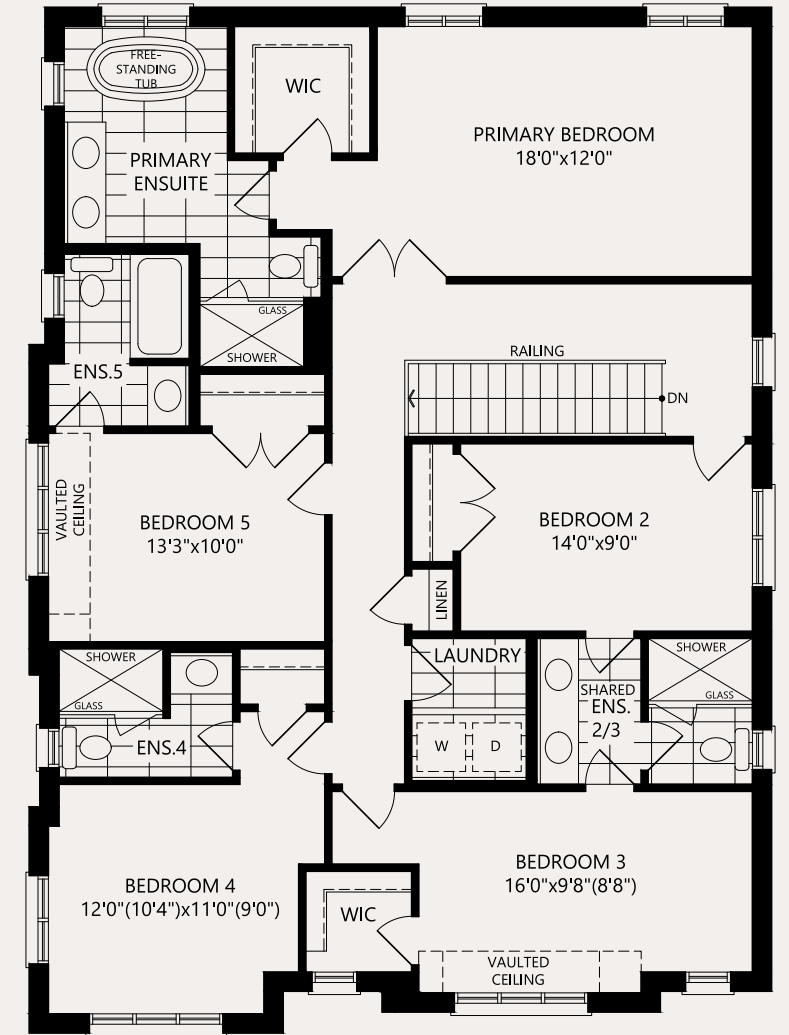
MAIN FLOOR



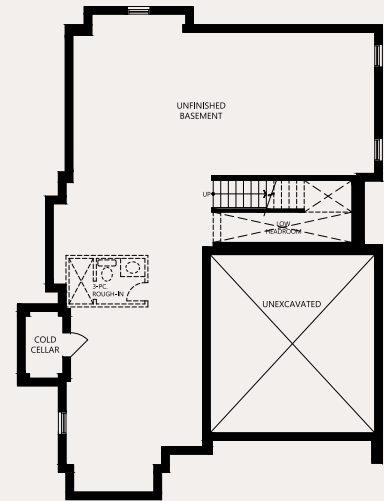
SECOND LEVEL - 4 BEDROOM



SECOND LEVEL - 5 BEDROOM



BASEMENT



Elevations: Not all variations are represented in marketing materials. Floorplans: Only Elevation A floorplan version is represented in marketing materials. Please refer to Schedule Y of the Agreement of Purchase and Sale for the floorplan/room dimensions/partial features that apply to the home purchased. Plans, measurements, and specifications are approximate and subject to change without notice. Tile orientation is ARTIST'S concept and subject to change without notice - consult Designer at time of colour selections with special requests. Actual usable floor space may vary from the stated floor area. All renderings are Artist's Concept. E. & O. E.

# PINE

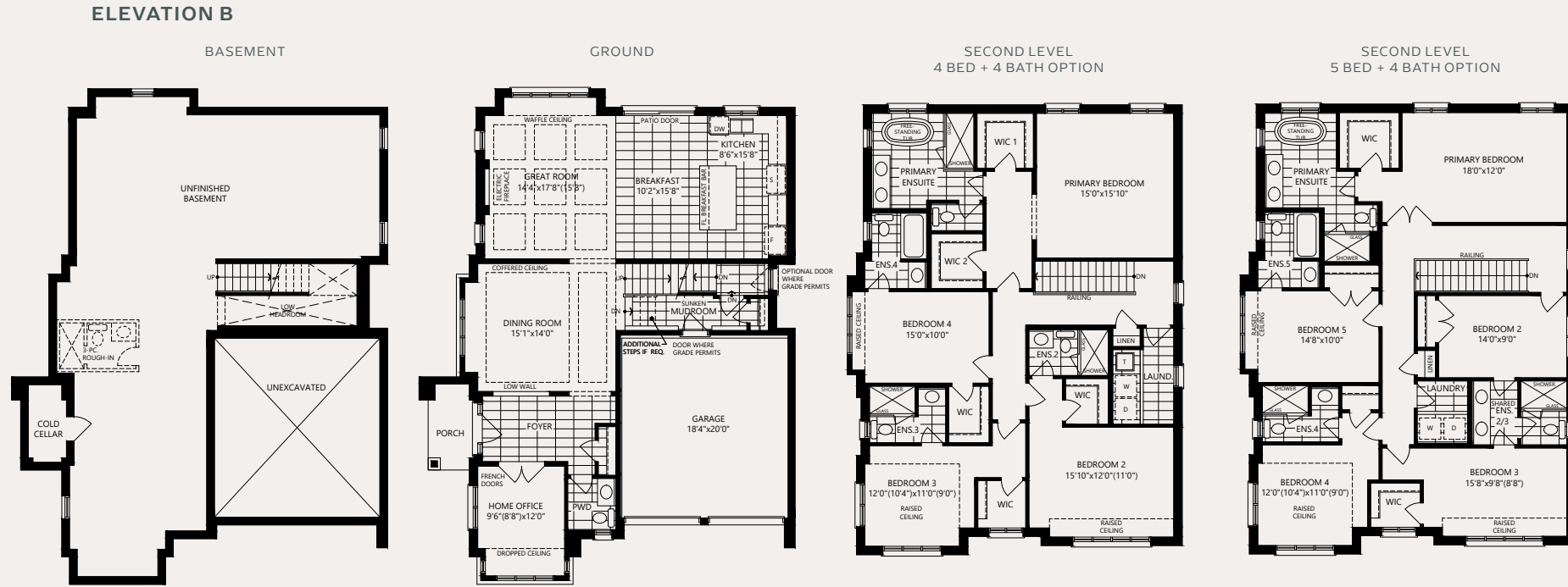
## MODEL 45-8

**4 BEDROOMS + 4.5 BATHS OR  
5 BEDROOMS + 5.5 BATHS**

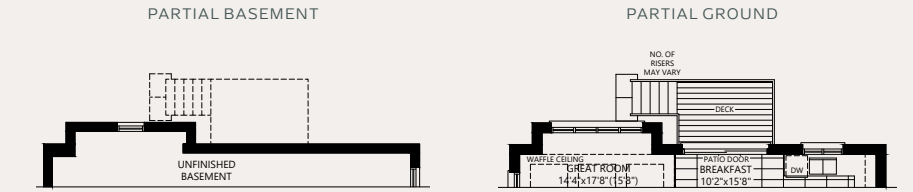
Inquire with sales office or use our webtools to learn more about the following:

- \* Partials - Elevation B - 4/5 Bed
- \* Partials - Elevation C - 4/5 Bed
- \* Rear Walk-Up Basement - A/B/C
- \*\* Rear Walk-Out Deck Condition - A/B/C

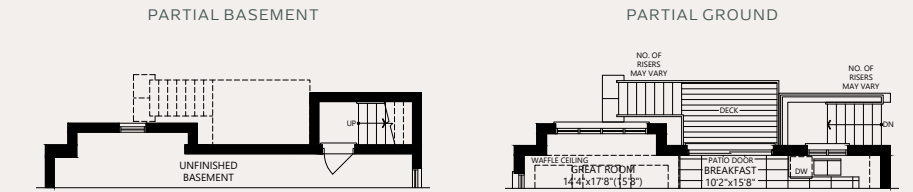
\* MUST BE ORDERED AT TIME OF SALE  
\*\* DETERMINED BY SITING AND GRADING



### DECK CONDITION ELEVATION A/B/C



### WALK-UP OPTION ELEVATION A/B/C (ONLY AVAILABLE WHERE DECK CONDITION ALSO EXISTS)



### ELEVATION C

