

# ORCHID

## SERIES 40

4 BEDROOMS + 4.5 BATHS

ELEVATION A | 3,095 SQ. FT.

ELEVATION B | 3,109 SQ. FT.

ELEVATION C | 3,103 SQ. FT.

# THE VALLEY

WOODBRIIDGE



B



A



C

MARYCROFT  
HOMES™

# ORCHID

## MODEL 40-5

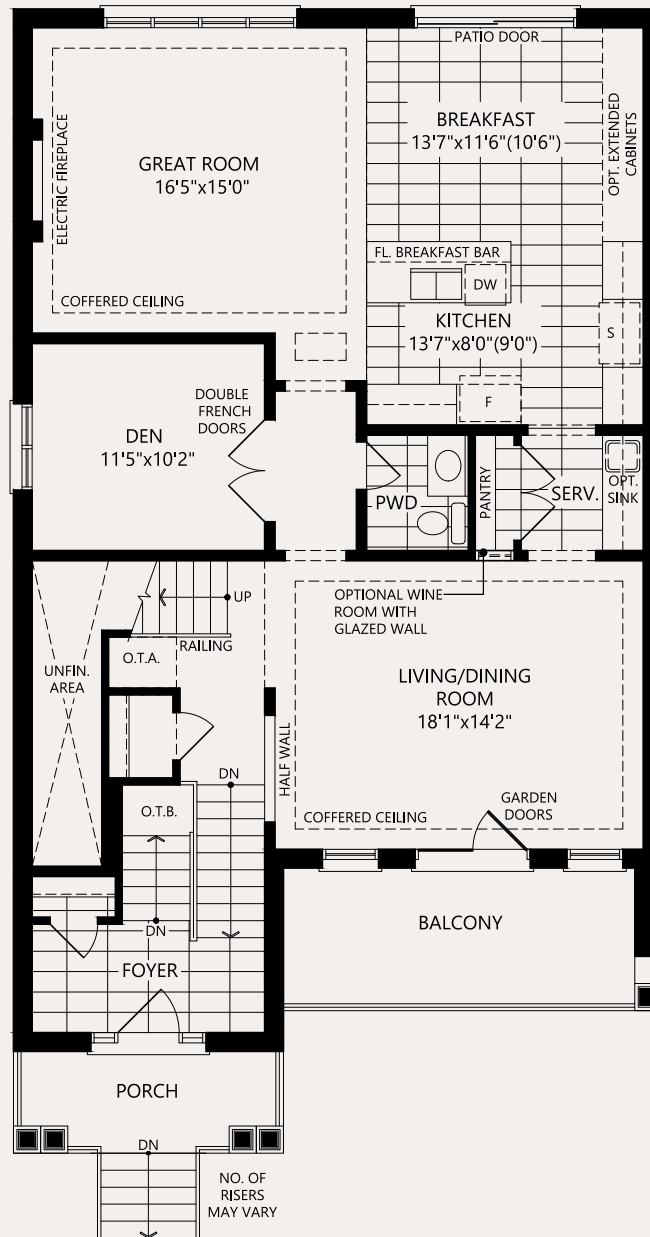
4 BEDROOMS + 4.5 BATHS

Inquire with sales office or use our webtools to learn more about the following:

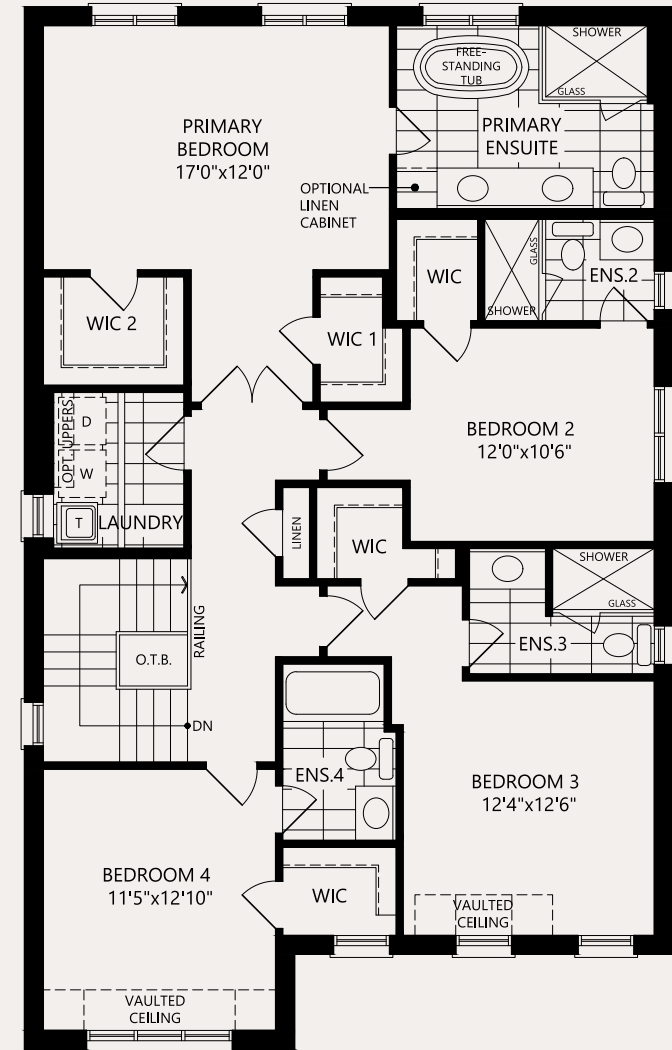
- \* Optional Finished Basement
- \* Partial - Elevation B
- \* Partial - Elevation C
- \*\* Rear Walk-Out Deck Condition - A/B/C

- \* MUST BE ORDERED AT TIME OF SALE
- \*\* DETERMINED BY SITING AND GRADING

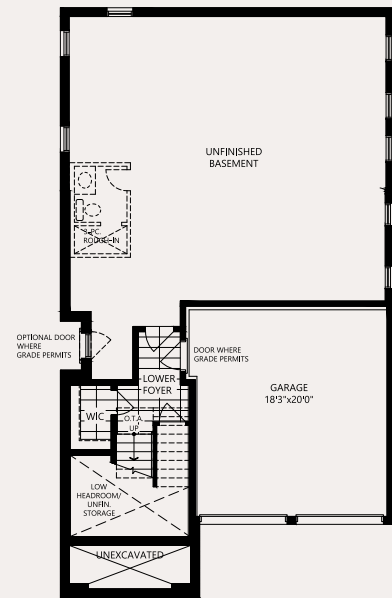
MAIN FLOOR



SECOND LEVEL



BASEMENT



Elevations: Not all variations are represented in marketing materials. Floorplans: Only Elevation A floorplan version is represented in marketing materials. Please refer to Schedule Y of the Agreement of Purchase and Sale for the floorplan/room dimensions/partial features that apply to the home purchased. Plans, measurements, and specifications are approximate and subject to change without notice. Tile orientation is ARTIST'S concept and subject to change without notice – consult Designer at time of colour selections with special requests. Actual usable floor space may vary from the stated floor area. All renderings are Artist's Concept. E. & O. E.

# ORCHID

## MODEL 40-5

4 BEDROOMS + 4.5 BATHS

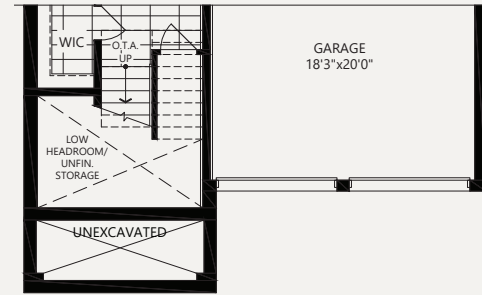
Inquire with sales office or use our webtools to learn more about the following:

- \* Optional Finished Basement
- \* Partials - Elevation B
- \* Partials - Elevation C
- \*\* Rear Walk-Out Deck Condition - A/B/C

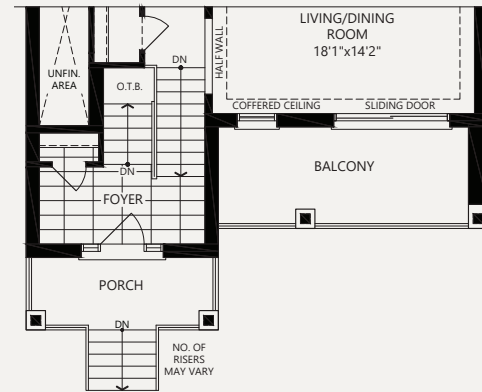
\* MUST BE ORDERED AT TIME OF SALE  
 \*\* DETERMINED BY SITING AND GRADING

### ELEVATION B

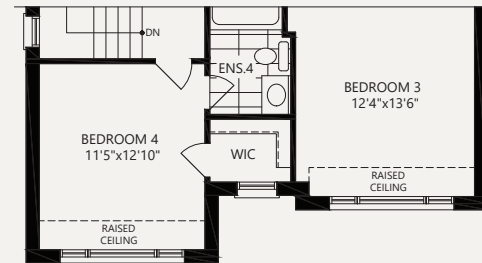
PARTIAL BASEMENT



PARTIAL GROUND

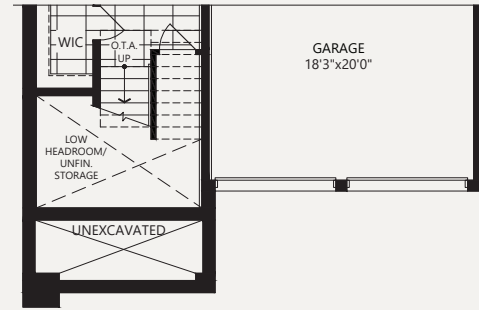


PARTIAL SECOND LEVEL

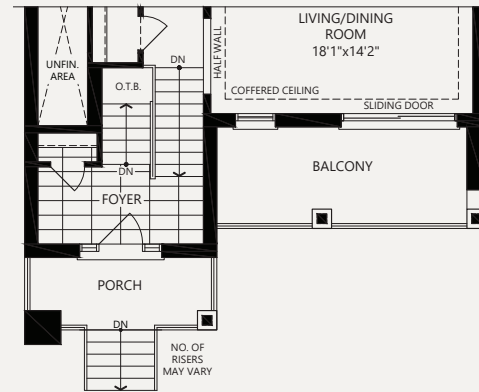


### ELEVATION C

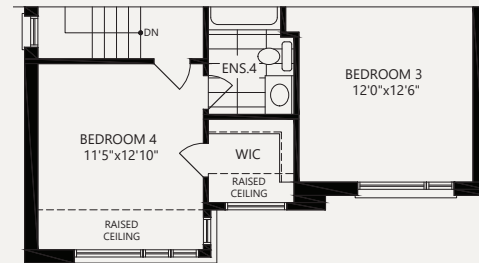
PARTIAL BASEMENT



PARTIAL GROUND

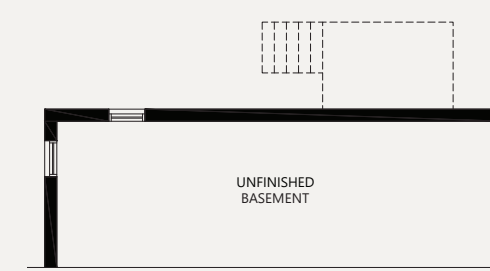


PARTIAL SECOND LEVEL

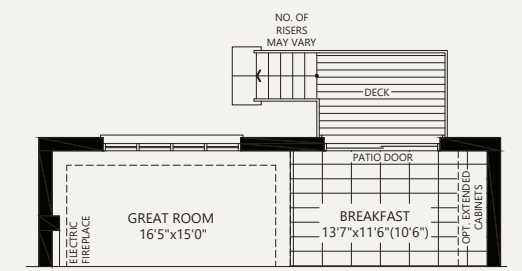


### DECK CONDITION ELEVATION A/B/C

PARTIAL BASEMENT



PARTIAL GROUND



### FINISHED BASEMENT OPTION ELEVATION A/B/C

