

MARYCROFT
HOMES™

Open to compare our
*4-bedroom and
5-bedroom options.*

MARYCROFTHOMES.COM

OAK

SERIES 45

4 OR 5 BEDROOMS + 4.5 BATHS

ELEVATION A | 3,563 SQ. FT.

ELEVATION B | 3,566 SQ. FT.

ELEVATION C | 3,562 SQ. FT.



A



B



C

THE
VALLEY
WOODBRIDGE

MARYCROFT
HOMES™

OAK

MODEL 45-4

4 OR 5 BEDROOMS + 4.5 BATHS

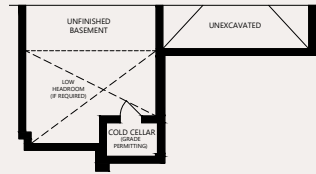
Inquire with sales office or use our webtools to learn more about the following:

- * Partials - Elevation B - 4/5 Bed
- * Partials - Elevation C - 4/5 Bed
- * Optional Service Stairs - A/B/C
- * Optional Elevator - A/B/C
- * Rear Walk-Up Basement - A/B/C
- ** Rear Walk-Out Basement - A/B/C
- ** Rear Walk-Out Deck Condition - A/B/C

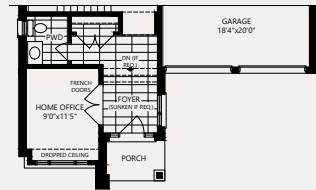
* MUST BE ORDERED AT TIME OF SALE
 ** DETERMINED BY SITING AND GRADING

ELEVATION B

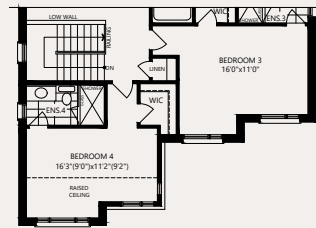
PARTIAL BASEMENT



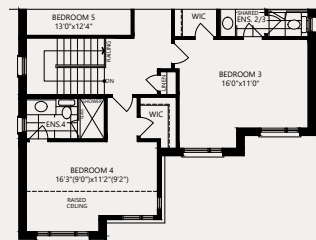
PARTIAL GROUND



PARTIAL SECOND LEVEL
4 BED + 4 BATH + MEDIA LOUNGE

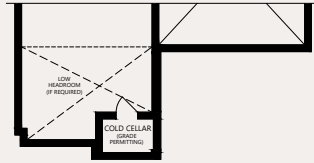


PARTIAL SECOND LEVEL
5 BED + 4 BATH OPTION

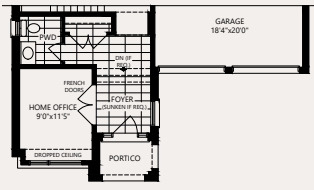


ELEVATION C

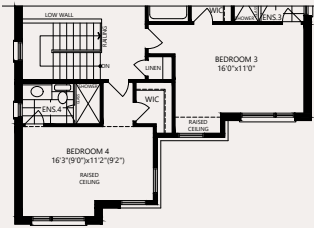
PARTIAL BASEMENT



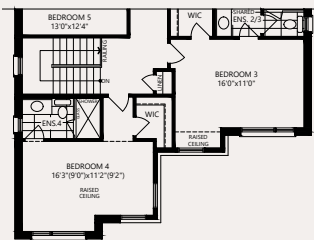
PARTIAL GROUND



PARTIAL SECOND LEVEL
4 BED + 4 BATH + MEDIA LOUNGE

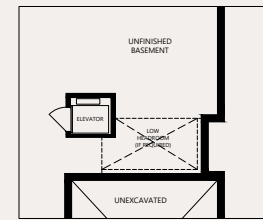


PARTIAL SECOND LEVEL
5 BED + 4 BATH OPTION

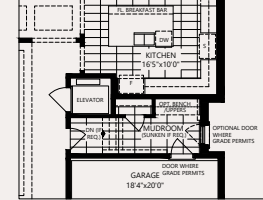


ELEVATOR OPTION ELEVATION A/B/C

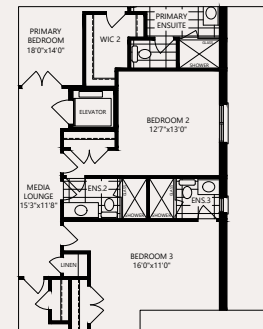
PARTIAL BASEMENT



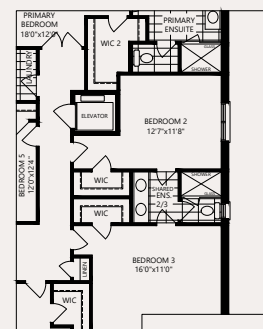
PARTIAL GROUND



PARTIAL SECOND LEVEL
4 BED + 4 BATH + MEDIA LOUNGE

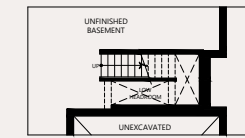


PARTIAL SECOND LEVEL 5 BED + 5 BATH

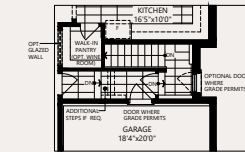


SERVICE STAIR OPTION ELEVATION A/B/C

PARTIAL BASEMENT

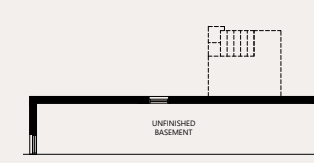


PARTIAL GROUND

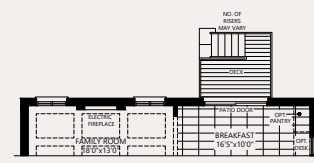


DECK CONDITION ELEVATION A/B/C

PARTIAL BASEMENT

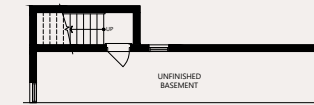


PARTIAL GROUND

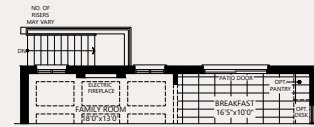


WALK-UP OPTION ELEVATION A/B/C

PARTIAL BASEMENT

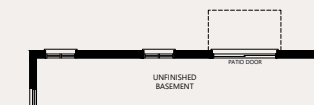


PARTIAL GROUND

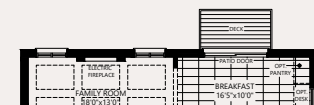


WALK-OUT BASEMENT CONDITION ELEVATION A/B/C

PARTIAL BASEMENT



PARTIAL GROUND



MARYCROFT
HOMES

THE
VALLEY
WOODBRIDGE