

BLUEBELL

SERIES 40

4 BEDROOMS + 4.5 BATHS

ELEVATION A | 2,719 SQ. FT.

ELEVATION B | 2,717 SQ. FT.

ELEVATION C | 2,722 SQ. FT.

THE VALLEY

WOODBRIIDGE



MARYCROFT
HOMES™

BLUEBELL

MODEL 40-3

4 BEDROOMS + 4.5 BATHS

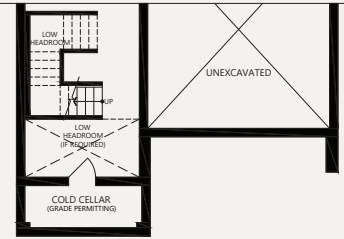
Inquire with sales office or use our webtools to learn more about the following:

- * Partials - Elevation B
- * Partials - Elevation C
- * Optional Service Stairs - A/B/C
- * Rear Walk-Up Basement - A/B/C
- ** Partials - Elevation B/C - Rear Upgrade
- ** Rear Walk-Out Basement - A/B/C
- ** Rear Walk-Out Deck Condition - A/B/C

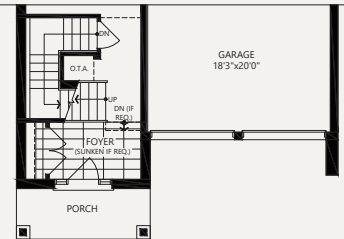
* MUST BE ORDERED AT TIME OF SALE
 ** DETERMINED BY SITING AND GRADING

ELEVATION B

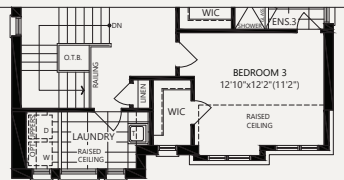
PARTIAL BASEMENT



PARTIAL GROUND

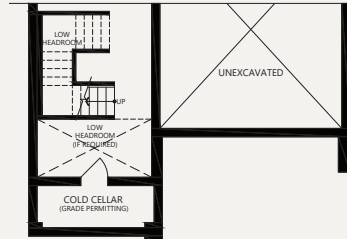


PARTIAL SECOND LEVEL
4 BED + 4 BATH OPTION

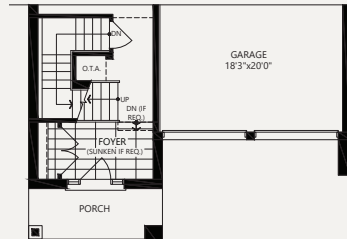


ELEVATION C

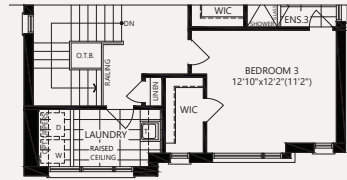
PARTIAL BASEMENT



PARTIAL GROUND

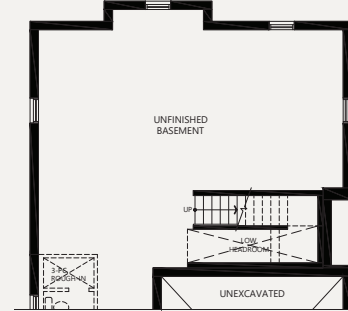


PARTIAL SECOND LEVEL

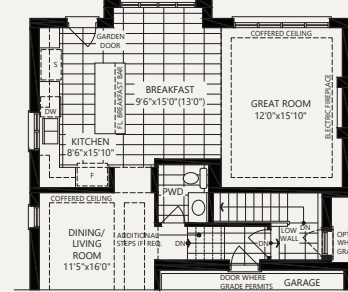


SERVICE STAIR OPTION ELEVATION A/B/C

PARTIAL BASEMENT

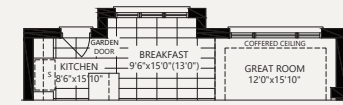


PARTIAL GROUND

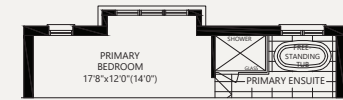


REAR UPGRADE

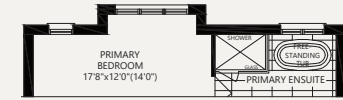
PARTIAL GROUND
ELEVATION B/C



PARTIAL SECOND LEVEL
ELEVATION B

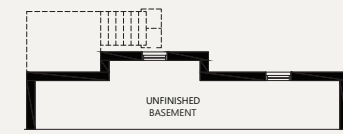


PARTIAL SECOND LEVEL
ELEVATION C

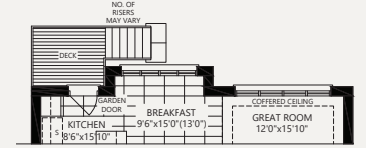


DECK CONDITION ELEVATION A/B/C

PARTIAL BASEMENT

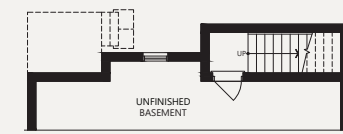


PARTIAL GROUND

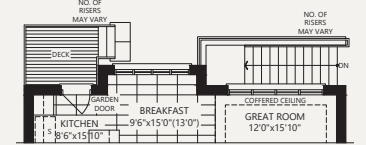


WALK-UP OPTION ELEVATION A/B/C (ONLY AVAILABLE WHERE DECK CONDITION ALSO EXISTS)

PARTIAL BASEMENT

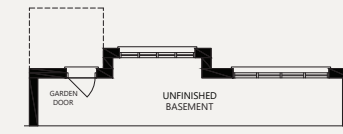


PARTIAL GROUND



WALK-OUT BASEMENT CONDITION ELEVATION A/B/C

PARTIAL BASEMENT



PARTIAL GROUND

