

BEECH

SERIES 40

4 BEDROOMS + 4.5 BATHS

ELEVATION A | 2,739 SQ. FT.

ELEVATION B | 2,736 SQ. FT.

ELEVATION C | 2,723 SQ. FT.

THE VALLEY

WOODBIDGE



A



B



C

MARYCROFT
HOMES™

BEECH

MODEL 40-8

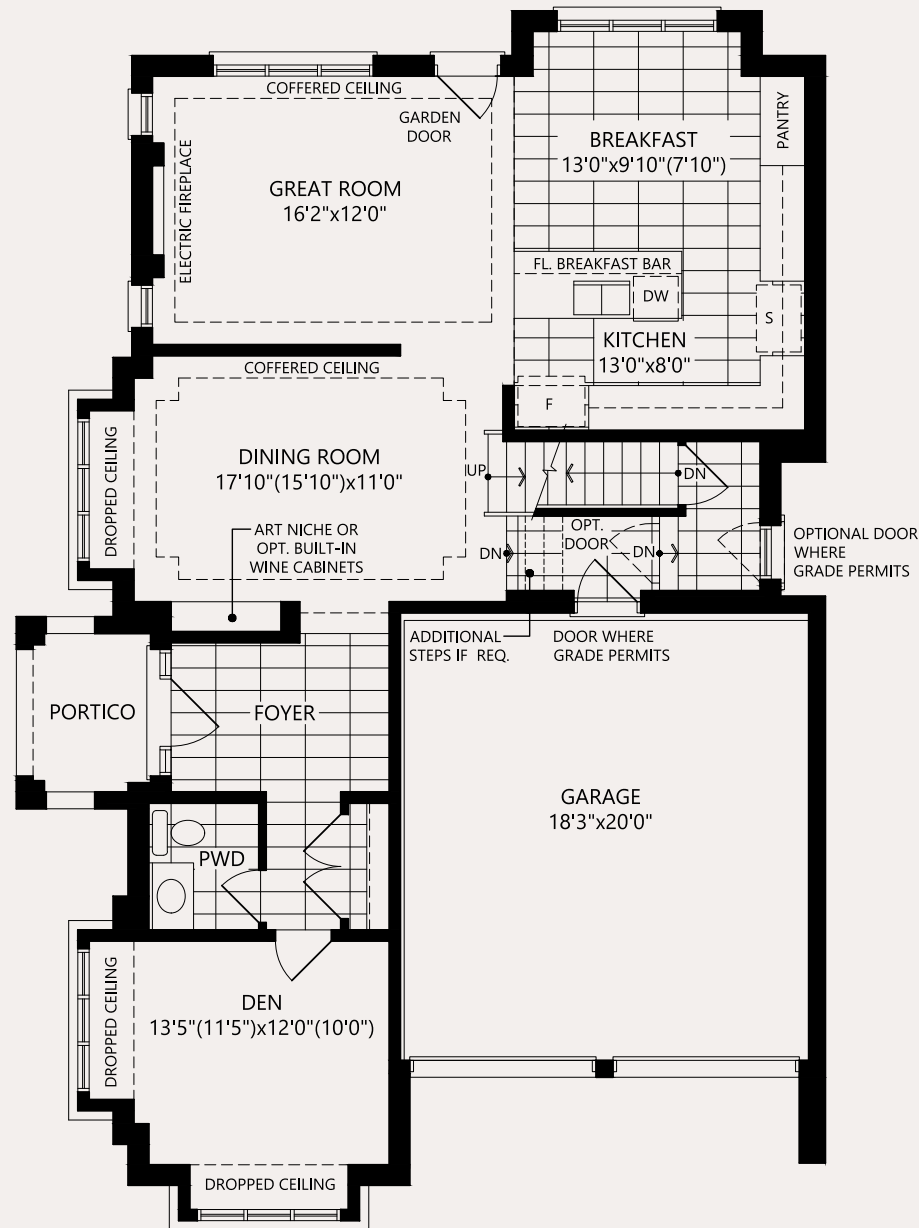
4 BEDROOMS + 4.5 BATHS

Inquire with sales office or use our webtools to learn more about the following:

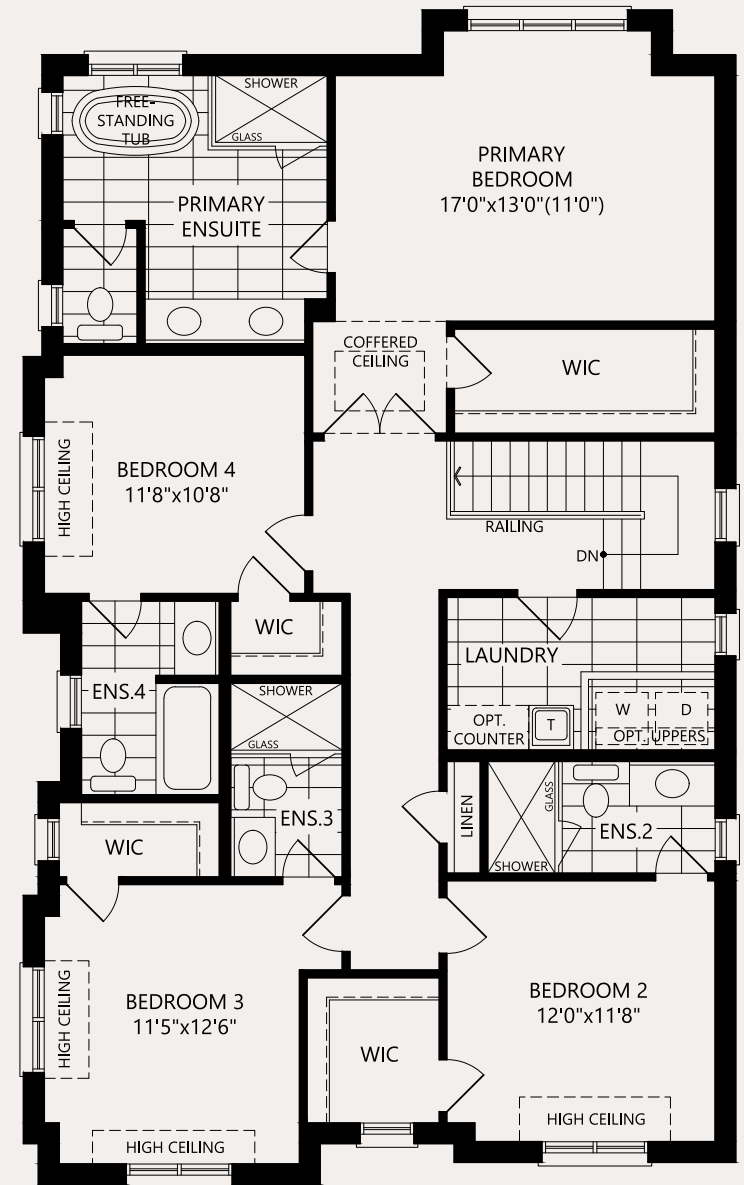
- * Elevation B Floorplans
- * Elevation C Floorplans
- * Rear Walk-Up Basement - A/B/C
- ** Rear Walk-Out Deck Condition - A/B/C

- * MUST BE ORDERED AT TIME OF SALE
- ** DETERMINED BY SITING AND GRADING

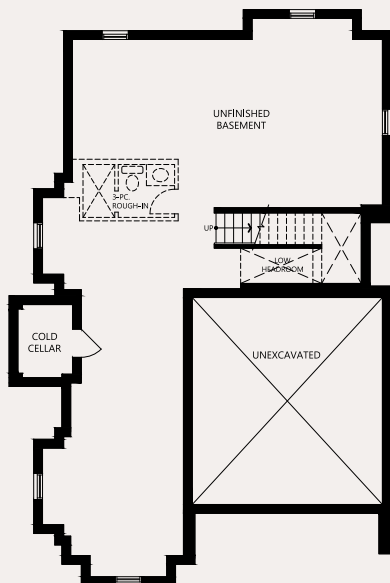
MAIN FLOOR



SECOND LEVEL



BASEMENT



Elevations: Not all variations are represented in marketing materials. Floorplans: Only Elevation A floorplan version is represented in marketing materials. Please refer to Schedule Y of the Agreement of Purchase and Sale for the floorplan/room dimensions/partial features that apply to the home purchased. Plans, measurements, and specifications are approximate and subject to change without notice. Tile orientation is ARTIST'S concept and subject to change without notice – consult Designer at time of colour selections with special requests. Actual usable floor space may vary from the stated floor area. All renderings are Artist's Concept. E. & O. E.

BEECH

MODEL 40-8

4 BEDROOMS + 4.5 BATHS

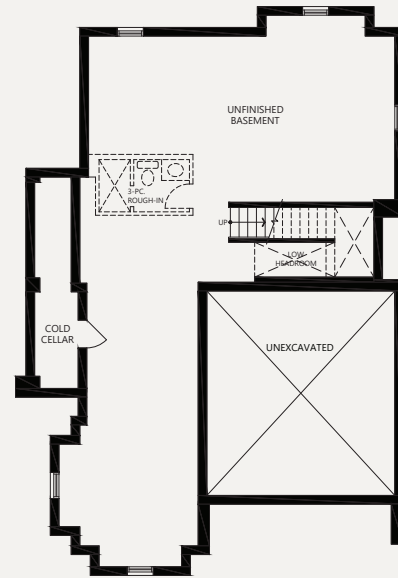
Inquire with sales office or use our webtools to learn more about the following:

- * Elevation B Floorplans
- * Elevation C Floorplans
- * Rear Walk-Up Basement - A/B/C
- ** Rear Walk-Out Deck Condition - A/B/C

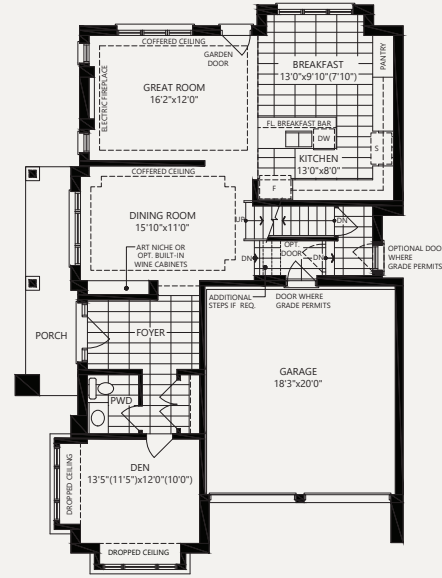
* MUST BE ORDERED AT TIME OF SALE
 ** DETERMINED BY SITING AND GRADING

ELEVATION B

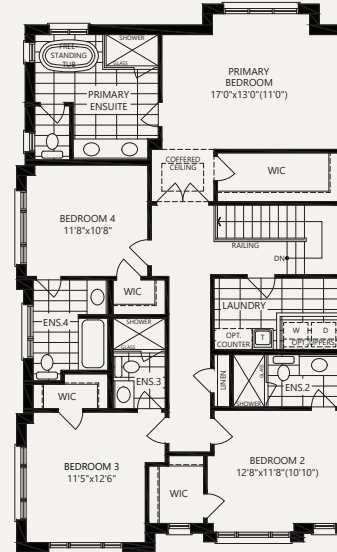
BASEMENT



GROUND

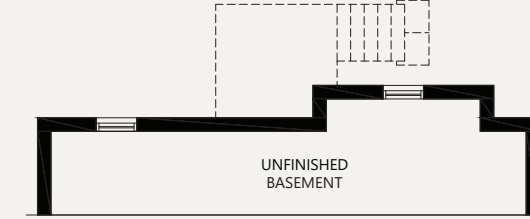


SECOND LEVEL

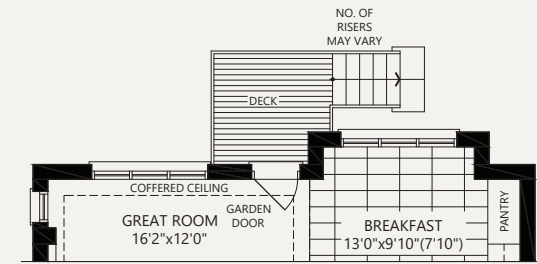


DECK CONDITION ELEVATION A/B/C

PARTIAL BASEMENT



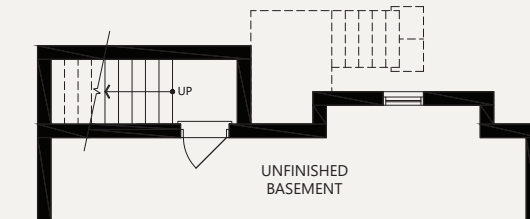
PARTIAL GROUND



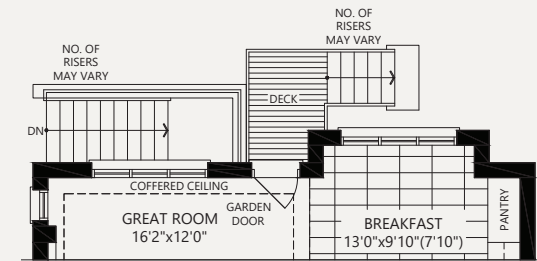
WALK-UP OPTION ELEVATION A/B/C

(ONLY AVAILABLE WHERE DECK CONDITION ALSO EXISTS)

PARTIAL BASEMENT

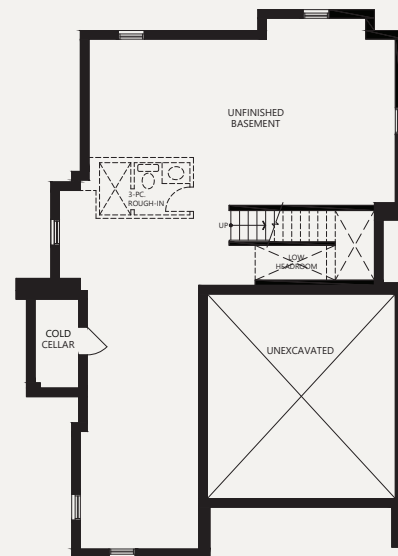


PARTIAL GROUND

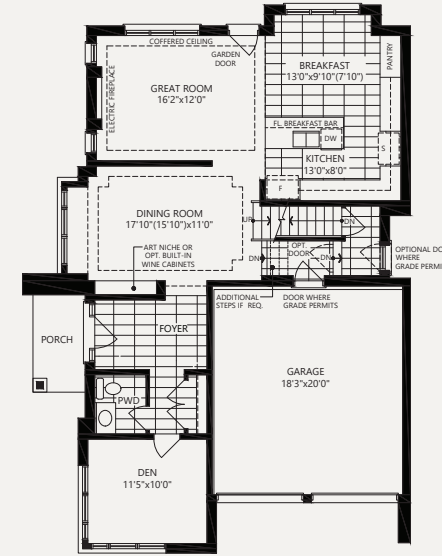


ELEVATION C

BASEMENT



GROUND



SECOND LEVEL

