

Monterey

50ft

SIMCOE
LANDING



ELEVATION A 3,174 SQ.FT.

MARYCROFT HOMES™

SIMPLE PLEASURES

SPECIAL NOTE: Available as: a) Monterey with taller basement, approximately 10' main floor ceiling, and approximately 9' second floor ceiling; or b) Monterey II with standard basement, approximately 9' main floor ceiling, and approximately 8' second floor ceiling. Minor deviations apply to marketing illustrations for Monterey II. See sales office for more information.

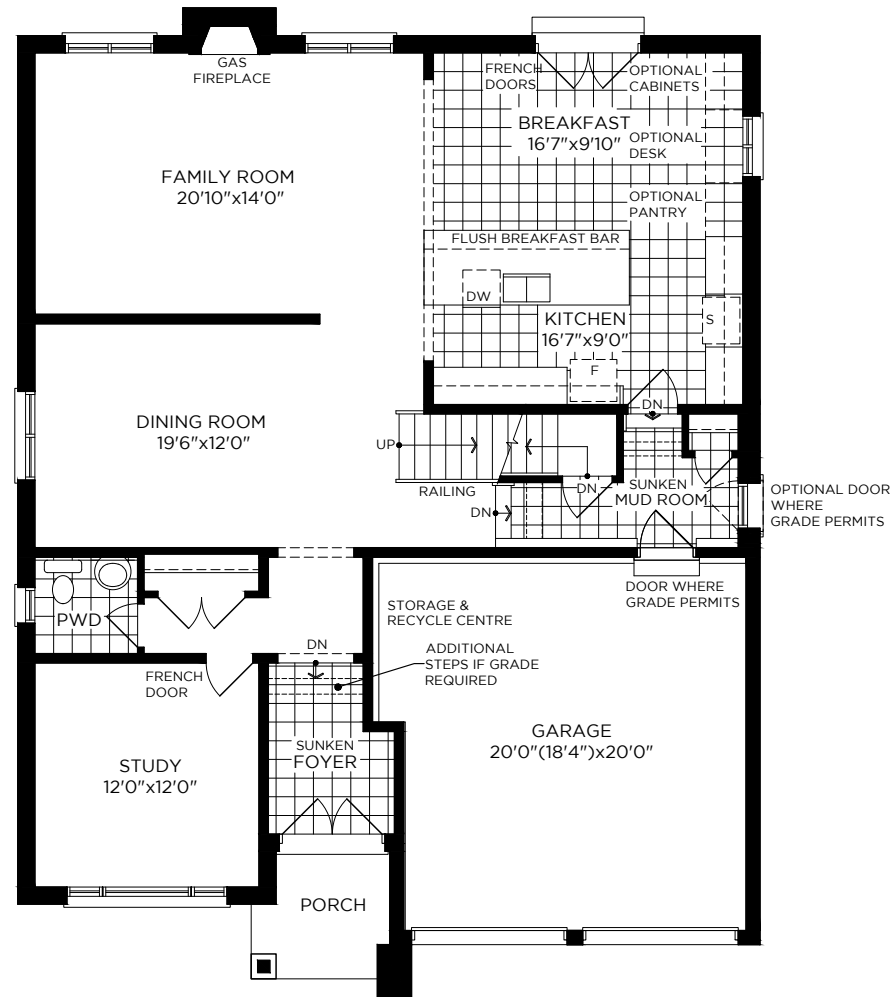
Elevations: Not all variations are represented in marketing materials. Floorplans: Only one floorplan version is represented in marketing materials. Please refer to Schedule Y of the Agreement of Purchase and Sale for the floorplan/room dimensions/partial features that apply to the home purchased.

Plans, measurements, and specifications are approximate and subject to change without notice. Actual usable floor space may vary from the stated floor area. All renderings are Artist's Concept. E. & O. E.

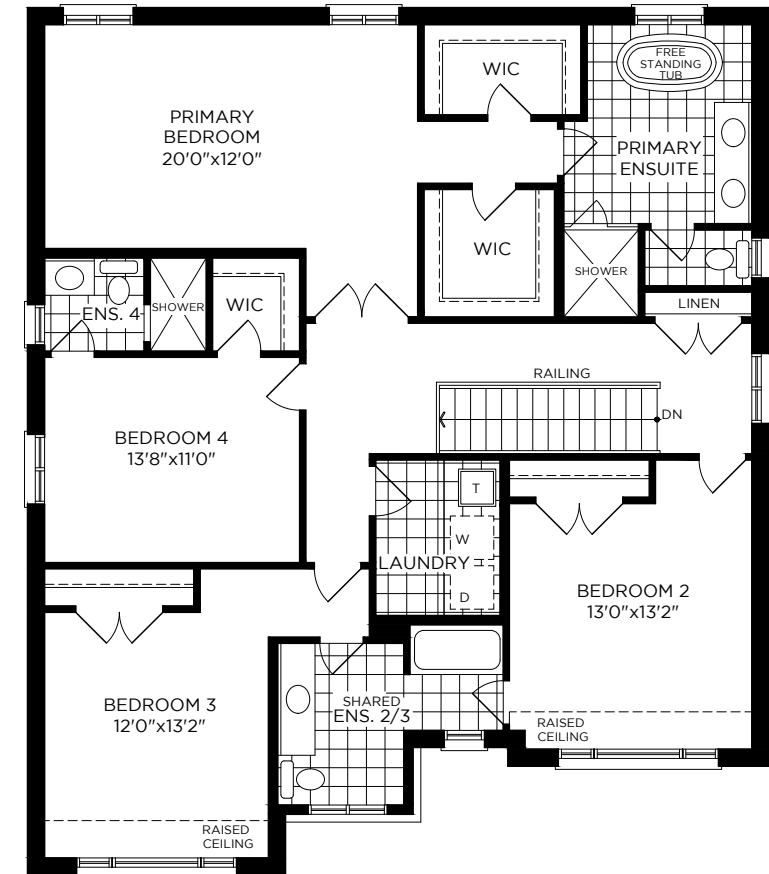
Monterey

50ft

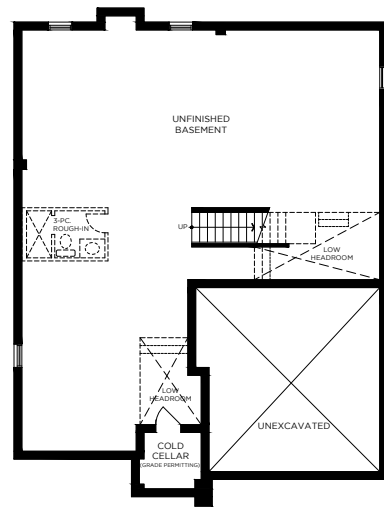
MAIN FLOOR ELEVATION A



SECOND FLOOR ELEVATION A



BASEMENT ELEVATION A



Elevations: Not all variations are represented in marketing materials. Floorplans: Only one floorplan version is represented in marketing materials. Please refer to Schedule Y of the Agreement of Purchase and Sale for the floorplan/room dimensions/partial features that apply to the home purchased.

Plans, measurements, and specifications are approximate and subject to change without notice. Actual usable floor space may vary from the stated floor area. All renderings are Artist's Concept. E. & O. E.

MARYCROFT HOMES™
SIMPLE PLEASURES

SIMCOE
LANDING