

# Balsam

50ft

SIMCOE  
LANDING



## MARYCROFT HOMES™

SIMPLE PLEASURES

SPECIAL NOTE: Available as: a) Balsam with taller basement, approximately 10' main floor ceiling, and approximately 9' second floor ceiling; or b) Balsam II with standard basement, approximately 9' main floor ceiling, and approximately 8' second floor ceiling. Minor deviations apply to marketing illustrations for Balsam II. See sales office for more information.

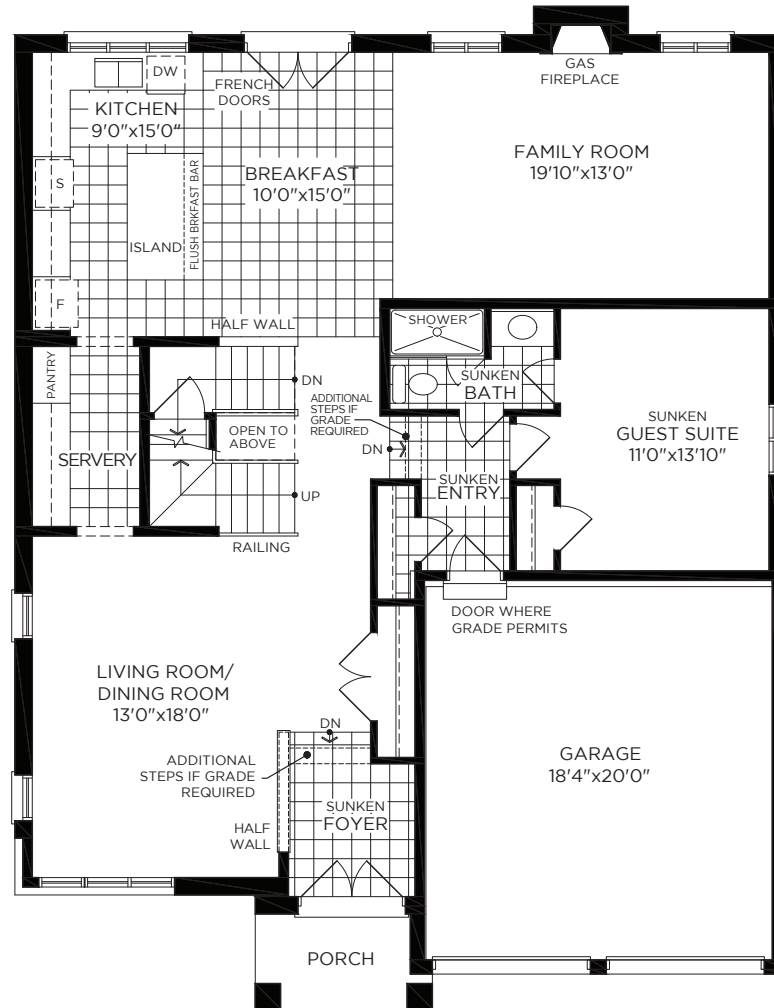
**Elevations: Not all variations are represented in marketing materials. Floorplans: Only one floorplan version is represented in marketing materials. Please refer to Schedule Y of the Agreement of Purchase and Sale for the floorplan/room dimensions/partial features that apply to the home purchased.**

Plans, measurements, and specifications are approximate and subject to change without notice. Actual usable floor space may vary from the stated floor area.  
All renderings are Artist's Concept. E. & O. E.

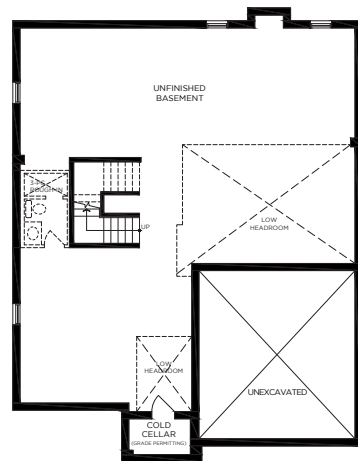
# Balsam

50ft

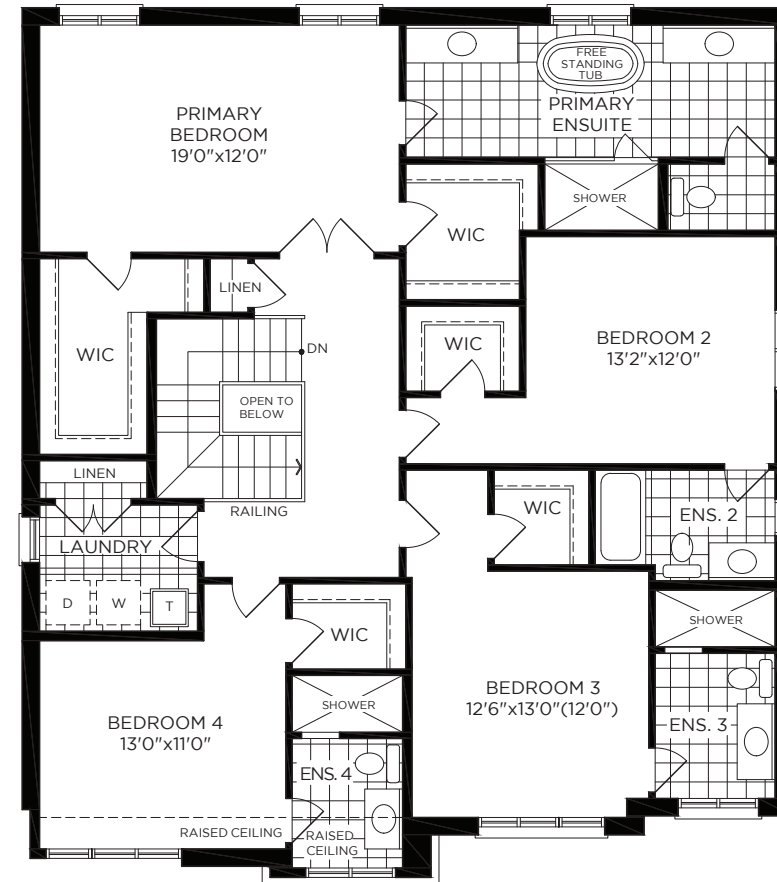
MAIN FLOOR ELEVATION A



BASEMENT ELEVATION A



SECOND FLOOR ELEVATION A



Elevations: Not all variations are represented in marketing materials. Floorplans: Only one floorplan version is represented in marketing materials. Please refer to Schedule Y of the Agreement of Purchase and Sale for the floorplan/room dimensions/partial features that apply to the home purchased.

Plans, measurements, and specifications are approximate and subject to change without notice. Actual usable floor space may vary from the stated floor area. All renderings are Artist's Concept. E. & O. E.

**MARYCROFT HOMES™**  
SIMPLE PLEASURES

SIMCOE  
LANDING